



# Flight Plan & Site Survey

Created using **RPAS Wilco®**

Operation Name:

Mission 02-12-2023

Pilot Name:

[REDACTED]

Pilot Certificate:

[REDACTED]

Flight Start:

February 12, 2023 5:50 PM

Flight End:

February 12, 2023 7:50 PM

Flight Area (Latitude):

52° 51' 8.70" N ( 52.852 )

Flight Area (Longitude):

119° 20' 8.60" W ( -119.336 )

Altitude - Radius:

Alt: 400 ft - Rad: 926.0 m ( 0.5 nm)

Airspace:

UNCONTROLLED

FIR - Contact:

CZVR - 604-586-4500

Weather:

-1.1 Celsius - Snow, Rain, Partially cloudy

Please ensure you received all required authorizations prior to flight.

## Disclaimer

This Site Survey was created using RPAS Wilco by AIM Robotics. The flight plan contained is intended only for RPAS flights on the date/time and location specified. The user accepts all responsibility for the accuracy and completeness of the information contained.

For the complete Terms & Conditions, see

<https://rpaswilco.com/#/tnc>

## Included

Site Survey

Obstacles (if available)

Nearby Aerodromes

Canadian Aviation Regulations

GFA

Aerodrome Supplements

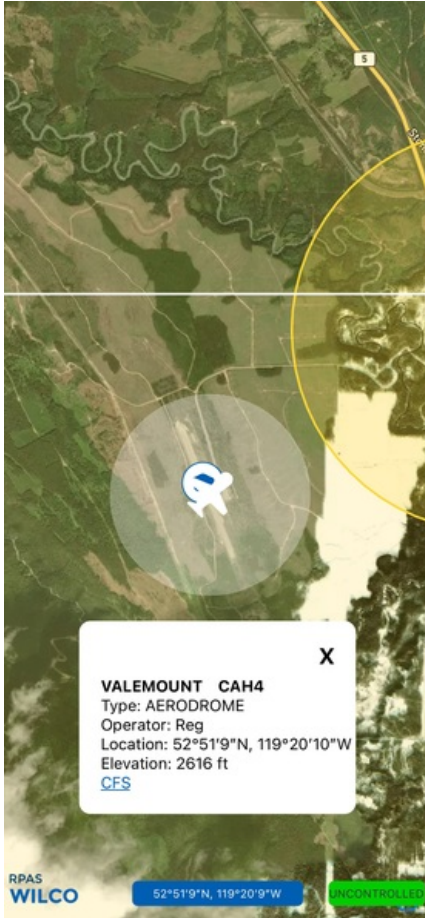
METAR & TAF (if available)

NOTAMs



CFS



## Flight Map

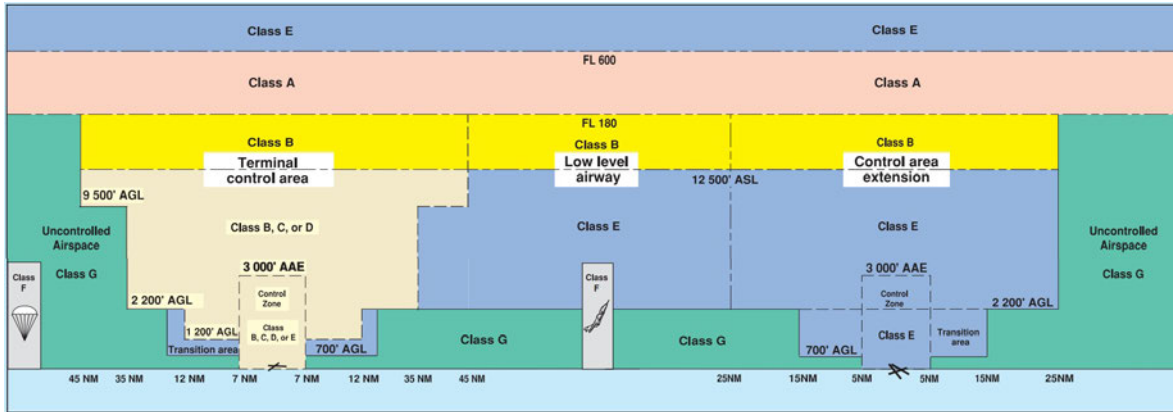


## MAP Details

|  | Latitude                        | Longitude                          |
|--|---------------------------------|------------------------------------|
|  <b>MODEL</b> | 52° 51' 8.70" N<br>( 52.852 )   | 119° 20' 8.60" W<br>( -119.336 )   |
|  <b>Pilot</b> | 52° 51' 12.30" N<br>( 52.8534 ) | 119° 20' 12.20" W<br>( -119.3367 ) |



## Airspace Classification



## Overlying Airspaces

| Class | Name                                  | Floor    | Ceiling  |
|-------|---------------------------------------|----------|----------|
| R     | CYR130 VALEMOUNT, BC 0csl by NOTAM    | 18000MSL | FL230    |
| F     | CYA131(M) VALEMOUNT, BC 0csl by NOTAM | 10000MSL | 18000MSL |

## Nearest Aerodromes & Distance from Operation

|  |                           |                  |
|--|---------------------------|------------------|
| VALEMOUNT (CAH4 AERODROME Reg)                         | Lat: 52.852 Long: 119.336 | 0.05 KM 0.03 NM  |
| VALEMOUNT (YELLOWHEAD HELICOPTERS) (CBV7 HELIPORT Reg) | Lat: 52.866 Long: 119.297 | 3.007 KM 1.62 NM |
| VALEMOUNT (CMH) (CMH6 HELIPORT Reg)                    | Lat: 52.788 Long: 119.257 | 8.904 KM 4.81 NM |

## Weather Information for Mission Day

Summary: Partly cloudy throughout the day with a chance of rain or snow throughout the day.

| Condition                    | Temperature | Feels Like  | Precipitation | Visibility | Cloud Coverage | Wind Speed | Humidity |
|------------------------------|-------------|-------------|---------------|------------|----------------|------------|----------|
| Snow, Rain, Partially cloudy | 1.1 Celsius | 6.4 Celsius | 100.0 %       | 11.0 Km    | 73.3 %         | 27.4 kph   | 80.9 %   |

# Canadian Aviation Regulations

## Division III — General Operating and Flight Rules

For full listing please visit <https://laws-lois.justice.gc.ca/eng/regulations/SOR-96-433/FullText.html#s-901.27>

### Visual Line-of-sight

- **901.11 (1)** Subject to subsection (2) no pilot shall operate a remotely piloted aircraft system unless the pilot or a visual observer has the aircraft in visual line-of-sight at all times during flight.
- **(2)** A pilot may operate a remotely piloted aircraft system without the pilot or a visual observer having the aircraft in visual line-of-sight if the operation is conducted in accordance with a special flight operations certificate — RPAS issued under section 903.03.

### Procedures

- **901.23 (1)** No pilot shall operate a remotely piloted aircraft system unless the following procedures are established:
  - **(a)** normal operating procedures, including pre-flight, take-off, launch, approach, landing and recovery procedures; and
  - **(b)** emergency procedures, including with respect to
    - **(i)** a control station failure,
    - **(ii)** an equipment failure,
    - **(iii)** a failure of the remotely piloted aircraft,
    - **(iv)** a loss of the command and control link,
    - **(v)** a fly-away, and
    - **(vi)** flight termination.
- **(2)** If the manufacturer of the remotely piloted aircraft system provides instructions with respect to the topics referred to in paragraphs (1)(a) and (b), the procedures established under subsection (1) shall reflect those instructions.
- **(3)** No pilot shall conduct the take-off or launch of a remotely piloted aircraft unless the procedures referred to in subsection (1) are reviewed before the flight by, and are immediately available to, each crew member.
- **(4)** No pilot shall operate a remotely piloted aircraft system unless the operation is conducted in accordance with the procedures referred to in subsection (1).

### Site Survey

**901.27** No pilot shall operate a remotely piloted aircraft system unless, before commencing operations, they determine that the site for take-off, launch, landing or recovery is suitable for the proposed operation by conducting a site survey that takes into account the following factors:

- **(a)** the boundaries of the area of operation;
- **(b)** the type of airspace and the applicable regulatory requirements;
- **(c)** the altitudes and routes to be used on the approach to and departure from the area of operation;
- **(d)** the proximity of manned aircraft operations;
- **(e)** the proximity of aerodromes, airports and heliports;
- **(f)** the location and height of obstacles, including wires, masts, buildings, cell phone towers and wind turbines;
- **(g)** the predominant weather and environmental conditions for the area of operation; and
- **(h)** the horizontal distances from persons not involved in the operation.

### Operations at or in the Vicinity of an Aerodrome, Airport or Heliport

- **901.47 (1)** No pilot shall operate a remotely piloted aircraft at or near an aerodrome that is listed in the *Canada Flight Supplement* or the *Water Aerodrome Supplement* in a manner that could interfere with an aircraft operating in the established traffic pattern.
- **(2)** Subject to section 901.73 no pilot shall operate a remotely piloted aircraft at a distance of less than
  - **(a)** three nautical miles from the centre of an airport; and
  - **(b)** one nautical mile from the centre of a heliport.
- **(3)** No pilot shall operate a remotely piloted aircraft at a distance of less than three nautical miles from the centre of an aerodrome operated under the authority of the Minister of National Defence unless the operation is conducted in accordance with a special flight operations certificate — RPAS issued under section 903.03.

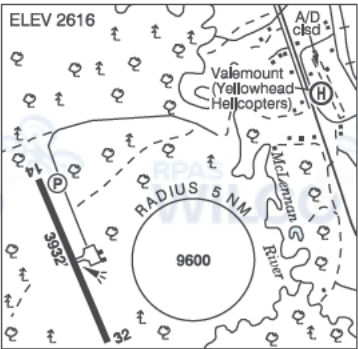
### Records

- **901.48 (1)** Every owner of a remotely piloted aircraft system shall keep the following records:
  - **(a)** a record containing the names of the pilots and other crew members who are involved in each flight and, in respect of the system, the time of each flight or series of flights and
  - **(b)** a record containing the particulars of any mandatory action and any other maintenance action, modification or repair performed on the system, including
    - **(i)** the names of the persons who performed them,
    - **(ii)** the dates they were undertaken,
    - **(iii)** in the case of a modification, the manufacturer, model and a description of the part or equipment installed to modify the system, and
    - **(iv)** if applicable any instructions provided to complete the work.
- **(2)** Every owner of a remotely piloted aircraft system shall ensure that the records referred to in subsection (1) are made available to the Minister on request and are retained for a period of
  - **(a)** in the case of the records referred to in paragraph (1)(a), 12 months after the day on which they are created; and
  - **(b)** in the case of the records referred to in paragraph (1)(b), 24 months after the day on which they are created.
- **(3)** Every owner of a remotely piloted aircraft system who transfers ownership of the system to another person shall, at the time of transfer, also deliver to that person all of the records referred to in paragraph (1)(b).

VALEMOUNT BC

CAH4

|          |  |
|----------|--|
| REF      | N52 51 10 W119 20 11 2.3NW<br>16°E (2017) UTC-8(7) Elev 2616'<br>A5014 LO2 RCAP                      |
| OPR      | Village 250-566-4435/1284 Reg  |
| PF       | A-1 C-2,4,5  |
| FLT PLN  |  |
| FIC      | Kamloops 866-WXBRIEF (Toll free within Canada) or 866-541-4101 (Toll free within Canada & USA)       |
| WX       | ALTIMETER/WIND 250-566-1284<br>1 hr PN 15-23Z± Mon-Fri (see COMM)                                    |
| SERVICES |  |
| FUEL     | 100LL 250-566-4435   |
| S        | 4,5  |
| RWY DATA | Rwy 14(142°)/32(322°) 3932x75 ASPH Rwy 32 down 0.33%   |
| RCR      | Opr Ltd win maint  |
| LIGHTING | 14-(TE ME) P1, 32-(TE ME) ARCAL-123.2 type K   |
| COMM     |  |
| ATF      | UNICOM (AU) 1 hr PN 15-23Z± Mon-Fri O/T tfc 123.2 5NM 4200 ASL                                       |
| PRO      | Rgt hand circuits Rwy 32 (CAR 602.96). Extv heli activity in the area, see BLUE RIVER/VALEMOUNT VTPC |
| CAUTION  | The rwy lctd aprx 2NE of aprt is clsd.   |



VALEMOUNT (YELLOWHEAD HELICOPTERS) BC (Heli)CBV7

|           |   |
|-----------|---|
| REF       | N52 51 59 W119 17 49 17°E (2013)<br>UTC-8(7) Elev 2600' A5014   |
| OPR       | Yellowhead Helicopters Ltd<br>250-566-4401 Reg PN   |
| PF        | A-1 C-2,3,4,5   |
| FLT PLN   | FIC Kamloops 866-WXBRIEF (Toll free<br>within Canada) or 866-541-4101 (Toll<br>free within Canada & USA)  |
| SERVICES  | Call out chg may be levied for one or<br>more svcs  |
| FUEL      | JA 16-24Z± Mon-Fri  |
| OIL       | Mobil 254 (MIL-L-23699)   |
| HELI DATA | FATO 75' x 75' GRASS/GRVL<br>Safety Area 100' x 100' Max heli overall leng h 75'.<br>Parking Pad 1 & 2: 35' dia CONC/ASPH   |
| RCR       | Opr   |
| COMM      | ATF tfc 123.2 5NM centred on Valemount A/D 1.6NM SW 4200 ASL.   |
| PRO       | Arr/dep 140° and 320° fr mid-point of abandoned rwy then final apch direct to<br>touchdown pad (H3). Avoid overflight of lcl residence. Extv heli ac ivity in the area,<br>see BLUE RIVER/VALEMOUNT VTPC. |



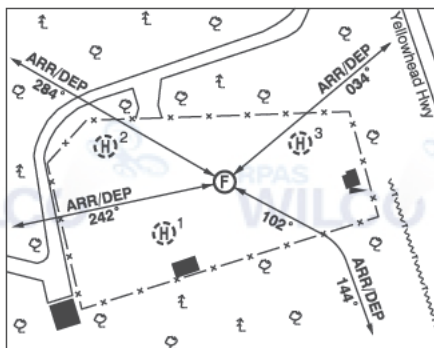


## BRITISH COLUMBIA

## AERODROME/FACILITY DIRECTORY

## VALEMOUNT (CMH) BC (Heli)

CMH6



|           |  |
|-----------|--|
| REF       | N52 47 18 W119 15 24 2.6SSE 16°E (2017) UTC-8(7) Elev 2711' A5014  |
| OPR       | Canadian Mountain Holidays 250-566-4111 or 403-762-7770 Nov 1-Apr 30;<br>604-414-4274 May 1-Oct 31 Reg PPR   |
| PF        | C-1,2,3,4,5  |
| FLT PLN   |  |
| FIC       | Kamloops 866-WXBRIEF (Toll free within Canada) or 866-541-4101 (Toll free within Canada & USA)   |
| SERVICES  |  |
| FUEL      | JA   |
| HELI DATA | FATO 90' dia GRVL Safety Area 120' dia<br>Parking Pad 1: 18' x 18' CONC<br>Parking Pad 2: 14' x 14' CONC<br>Parking Pad 3: 102' x 105' x 103' x 75' irregular ASPH |
| RCR       | Opr Day only   |
| COMM      |  |
| ATF       | tfc 123.2 5NM 5800 ASL   |
| A/G       | CMH Valemount 150.845 R 156.975 T (CTCSS 179.9)  |
| PRO       | Arr/dep 034° fr heli.<br>Arr/dep 242° fr heli.<br>Arr/dep 284° fr heli.<br>Arr/dep curved 102° to 144° fr heli.  |
| CAUTION   | Extv heli activity in the area, see BLUE RIVER/VALEMOUNT VTPO. P-lines aprx 30 AGL SE of heli.   |